

# Cynomolgus Claudin 6 Protein-VLP

Cat. No. CLD-CM006



## Description

<b>Source</b>	Recombinant Cynomolgus Claudin 6 Protein-VLP is expressed from HEK293. It contains Met1 - Val220.
<b>Accession</b>	G7Q0B0
<b>Molecular Weight</b>	The target protein has a predicted MW of 24.60 kDa.
<b>Endotoxin</b>	Less than 1 EU per µg by the LAL method.
<b>Purity</b>	> 95% as determined by HPLC

## Formulation and Storage

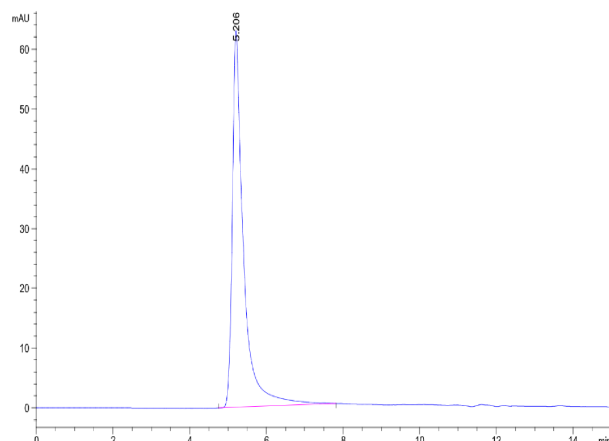
<b>Formulation</b>	Supplied as 0.22 µm filtered solution in PBS, 300 mM L-Arginine (pH 7.4). Notice: If you need it for immunization, water-soluble adjuvant is recommended.
<b>Storage</b>	Valid for 12 months from date of receipt when stored at -80°C. Recommend to aliquot the protein into smaller quantities for optimal storage. Please minimize freeze-thaw cycles.

## Background

Claudin-6 is a multipass transmembrane protein in the Claudin family. Claudin-6 is expressed by epithelial cells where it participates in tissue development and the maintenance of tight junction integrity. Human Claudin-6 shares 88% and 86% amino acid sequence identity with mouse and rat Claudin-6, respectively.

## Assay Data

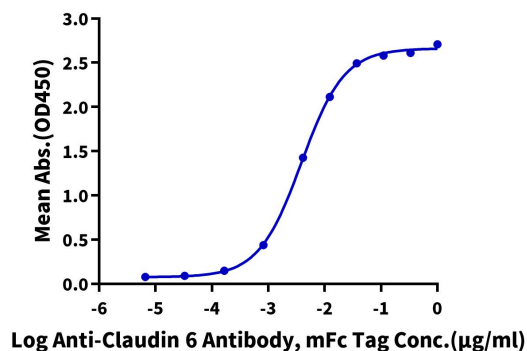
### SEC-HPLC



The purity of Cynomolgus Claudin 6 VLP is greater than 95% as determined by SEC-HPLC.

### ELISA Data

**Cynomolgus Claudin 6 VLP ELISA**  
0.5µg Cynomolgus Claudin 6 VLP Per Well



Immobilized Cynomolgus Claudin 6 VLP at 5 µg/ml (100 µl/Well) on the plate. Dose response curve for Anti-Claudin 6 Antibody, mFc Tag with the EC50 of 4 ng/ml determined by ELISA (QC Test).